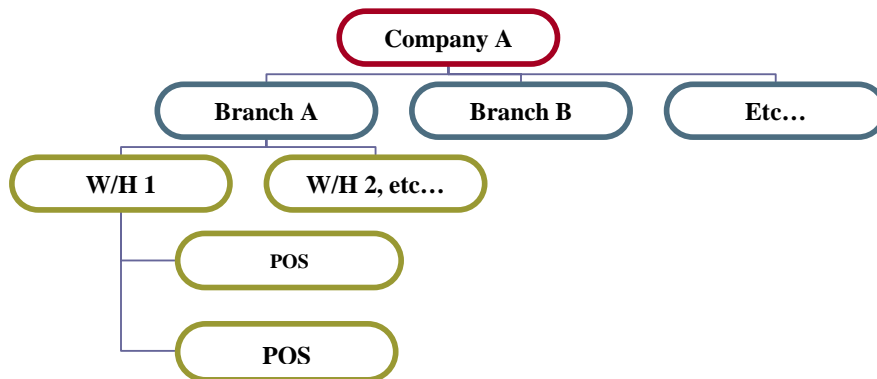


Application	Inventory Management System
Introduction	<ul style="list-style-type: none">• Complete business solution designed to help users enhance their business management capabilities.• Combines unlimited information collection and powerful innovative features.• Developed by using the latest Microsoft application technology.• User-friendly & easy to operate application• Flexible & straight-forward functionality• Clear, simple, and compatible structure• Applicable to large, medium & small size businesses• Suitable for industrial, trading & other sectors
Technical Information	<ul style="list-style-type: none">• Developed under VB.Net & SQL Server• Operates under Win XP (sp1), 2000(sp3 or later), win server 2003, win 2000 server (sp3 or later), win NT4.0 (sp 6a)• Client-server architecture• User is enabled to build his own reports & queries• Integrated with all other silicon packages
System Integration	eQual® is an integrated modular business application that combines financial accounting, Inventory management, production management, POS, CRM, Task manager, Desktop mail, and Payroll management.
Integrations with MS	As a VB.net application, eQual® operates in a homogenous MS windows environment enabling the user to convert any report into MS Word document or Excel worksheet.
Backup & Restoring Data	It is a feature that enables the user to save his data to any internal or external storage device and restore it back once required.
System Administration	Enables the administrator to define, for each user, a controlled set of operational authorizations such as accessing of fiscal years and companies, accessing of forms and reports, editing or deleting slips, accessing to costs, etc...

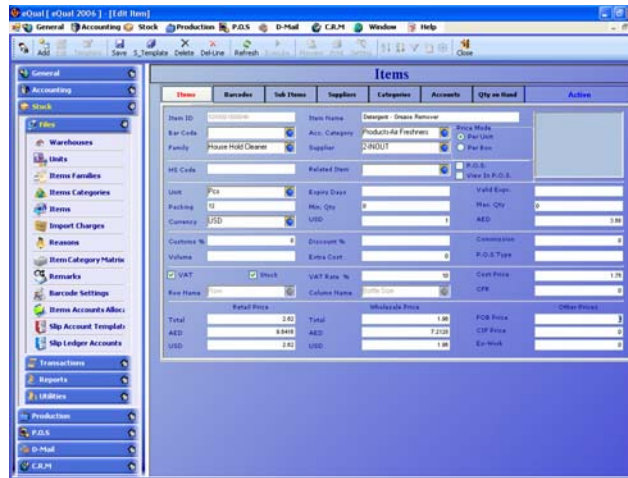
Multi-User	eQual® can run on single stations or can be operated by many users through local area network (LAN) or wide area network (WAN).
Multi-Company	Maintains an multiple number of companies with independent items, categories, warehouses, POS's, customers, suppliers & interface languages.
Consolidated Reports	The user is enabled to combine the stocks of the available branches into a single consolidated report and obtain a wider picture of his company's stocks.
Multi-Year	eQual® holds an unlimited number of operational years under each listed company created in your database directory.
Multi-Branch	The user is enabled to manage and control the inventory of various branches operated under each company.
Multi-Warehouse & Point of Sales	eQual® enables the user to define and manage multiple number of warehouses & point of sales under each company or branch
Multi-Department & Sub-Department	eQual® enables the user to define multiple sets of departments and sub departments and hence distribute the company's sales and purchases simultaneously among them.
Multi- Cost Center & Sub- Cost Center	eQual® enables the user to define multiple sets of cost centers and sub cost centers and hence distribute the company's sales and purchases simultaneously among them.



Multi-Currency	eQual® carries unlimited number of currencies that enable the user to register his sales and purchases in the local currency as well as other foreign currencies.
Double Basic Currency	eQual simultaneously converts all entries into two basic units and enables the user to handle all posted transactions in three currencies (1 st local basic currency, 2 nd basic currency, and transaction currency) and therefore generates his reports in any international currency.
Currency Log File	Is an archive file that keeps the daily rates of the used currency and enables the user to retrieve any of the registered data at any period of time.
Multi-Lingual	eQual® supports multiple languages (English, French or Arabic etc...) and enables the user to choose his desired interface language and change its layout at any time.
Searching Engine	eQual® effectively helps the user track and find absolutely any item or entry wherever he was in the system.
Sub-items & Bundles	eQual® allows the user to associate various items to a certain key product on purpose of using them either as main parts of that particular product or as promotional items or bundles along with each sale. This process handles the movement of sub items and promotional bundles in an efficient way and keeps your stocks constantly updated with each completed transaction.
Report Layout	Is a feature that entitles the user to re-design the existent reports and build his own layouts.
Entry Classification	Is a feature that allows the user to classify his entries into nine different types such as cash & credit sales, cash & credit purchase, transfer slips, adjustment slip, sales & purchase return.
Account Classification	Is a feature that allows the user to classify his goods under certain ledgers or sub ledger and instantly post all his sales and purchases to these predefined accounts.
Accounts Activation	Is a feature included in eQual® to activate / inactivate any account or sub account and therefore prevent users from falling accidentally in possible errors during the process.
Item Category	Is a feature through which the user is entitled to group his stock items into different categories & sub categories.

Bar coding

it is a feature that brings technology and simplicity into your warehouses through automatic data collection or real-time data capture and exchange. An easy and accurate data entry method that enables the user to track the required products and instantly generate his goods received and delivery notes and updates his stocks in a single click.



Data Matrix

It is an innovative feature that manages different kinds of series stocks such as handling a product of different colors and sizes.

Automatic opening balances

eQual® allows the users to create their opening stock slips for a single branch or multiple branches as well as creating consolidated opening balances in a single click.

Import Charges Distribution

Is a costing module through which the user can automatically calculate the various import expenses and charges paid by the company and distribute them on the purchased goods.

Value Added Tax (VAT)

is an optional feature available for companies operating under tax systems.

Transaction Log File

Is a feature where each processed transaction is documented and maintained into a Log File.

Specific Features

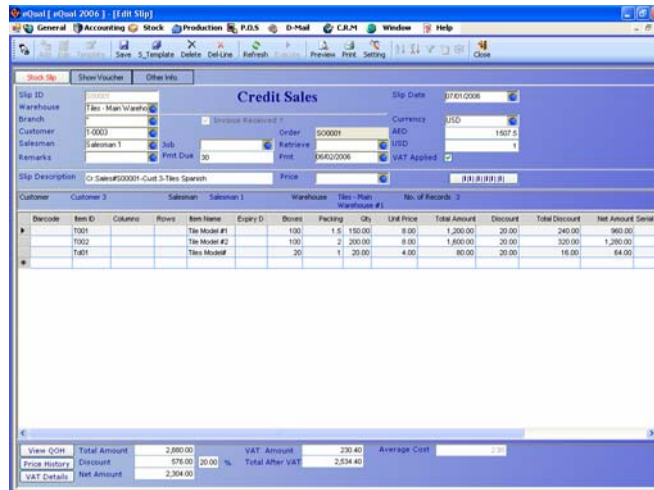
- Auto generating of accounting vouchers
- Alphanumeric item-code up to twenty digits
- Item picture embedment (JPG or GIF format)
- Managing of promotional packages & bundles
- Ability to import items from invoices templates
- Generating accounting vouchers form various stock slips
- Automatic transfer of items, categories, and accounts from one year to another.

Managing Warehouses

- Goods transfer between warehouses
- Stock adjustment & write off
- Minimum & maximum stock control
- Periodical Inventory by cost price & expiry dates.
- Profit per item & warehouse
- Unlimited user-defined tree structured items
- Managing partial unpacking operations
- Managing consignment operations
- Tracking expiry dates and serial numbers
- Item's history with former prices
- Profit per warehouse

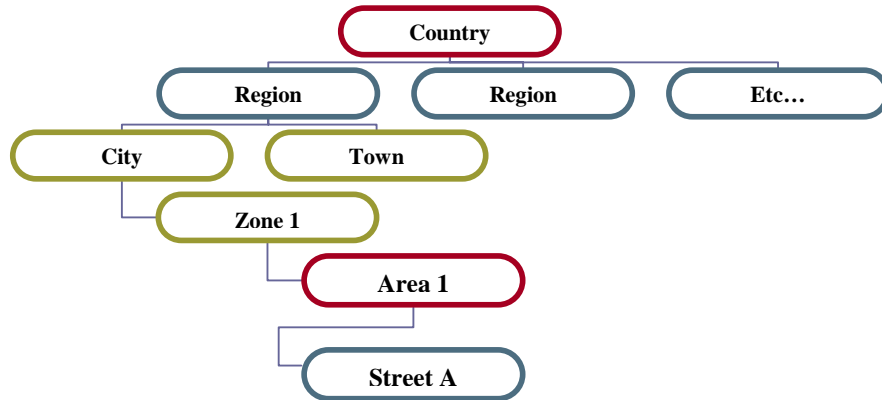
Managing Sales

- Sales deliveries initiated from different warehouses in a single transaction
- Sales by retail price, wholesale price, or last customer price
- Profit per invoice, item, salesman & customer
- Discount per item or total invoice value
- Sales and delivery orders
- Proforma invoices
- Cash & credit sales
- Sale return handling
- Invoice printing on plain paper or pre-printed form



Locations

Is a feature that enables the user to organize his customers and suppliers as per their locations

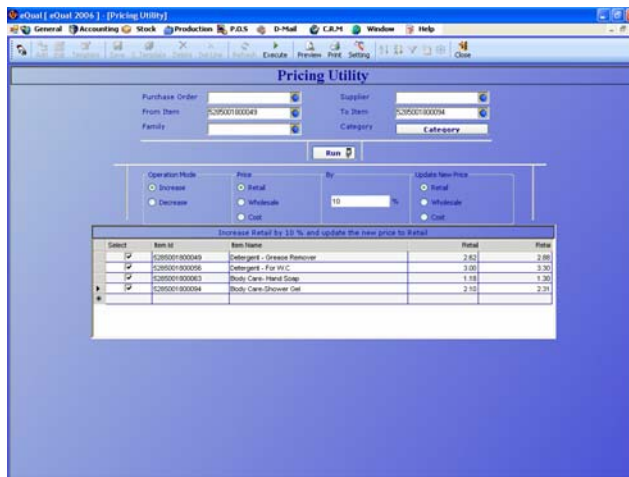


Managing Purchases

- Purchases by last purchased price or last supplier price
- Distributing goods received to different warehouses in a single transaction
- Accumulated average cost
- Purchases by last Purchased price or last supplier price
- Weighted average cost
- Reordering level module
- Purchase order
- Import expense allocation on purchased goods
- Goods received notes
- Cash & credit purchase
- Purchase return handling

Pricing Module

Is a utility feature that enables the user to add his mark ups on received goods as well as increasing or decreasing existing prices of required items.



Managing Clients & Vendors Accounts

Is a feature where users can define the credit limit allowed to each customer and supplier and efficiently control their accounts through receiving regular alerts every time they exceed their limits

Sales Commission

it is a feature where eQual® entitles the user to apply an automatic commissions on sales.

Discounts

it is a feature where eQual® entitles the user to apply his discount policy in four different ways:

1. Automatic discount applied by customer and supplier.
2. Discount per Item applied by percentage rate.
3. Lump discount applied per item
4. Lump discount applied per invoice

Task manager & Reminder

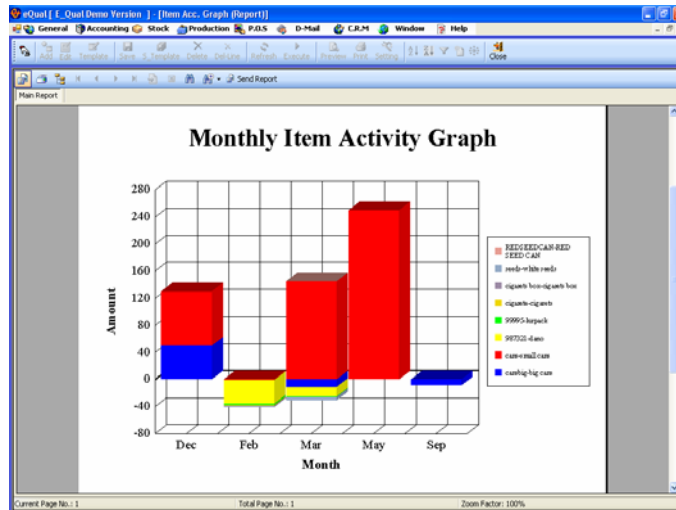
eQual® is equipped with a task manager allowing users to schedule and set reminders for their daily and future tasks.

Desktop Mail

Is a mailing system allowing users to exchange emails with other users operating on the same software application.

Analytical graphic charts

Allows the user to generate comparative charts for a set of selected items.



System Reports

Special consideration has been given to the reporting system to enable users generate data in the most accurate and practical way. "From – To" technique enables the user to generate an extremely wide and detailed range of correlated data and conversely enables him to narrow down his search to a precise and specific piece of information.

Reports specifications

- Data can be generated in local currency, second basic currency and actual transaction currency.
- Data can be generated by branch, department and project.
- Consolidated reports can be generated for existing branches.
- Reports can be generated with brought forward balances.
- Rich in functional analysis and charts.
- Reports can be displayed in PDF, XLS, & Doc forms.

Available Reports

- Daily journal reports
- Profit analysis reports by:
 - a) Invoice
 - b) Period (From Date - To Date)
 - c) Day by Day
 - d) Month by Month
 - e) Customer
 - f) Sales person
- Sales Reports By
 - a) Area
 - b) Sales Person
 - c) Customer
- Item Information Reports
- Item Activity Reports
- Item Price List

- Suppliers Last Prices Report
- Customers Last Prices Report
- Item Sales Analysis Reports
- Monthly Sales Analysis Reports By
 - a) Sales Persons (Month By Month)
 - b) Item (Month By Month)
 - c) Customers (Month By Month)
 - d) Areas (Month By Month)
 - e) Families (Month By Month)
- Movement Analysis Report
- Monthly Sales and Purchases Reports
- Inventory Reports By
 - a) Item Last Cost
 - b) Item Average Cost
- Inventory by Expiry Dates
- Warehouse Activity Reports
- Customer Activity Reports-
- Supplier Activity Reports
- Sales Persons Activity Reports
- Statistical Charts for Comparative Sales and Purchases
- Commission Reports Based on
 - a) Invoicing
 - b) Settled Invoices
 - c) Sales Margins