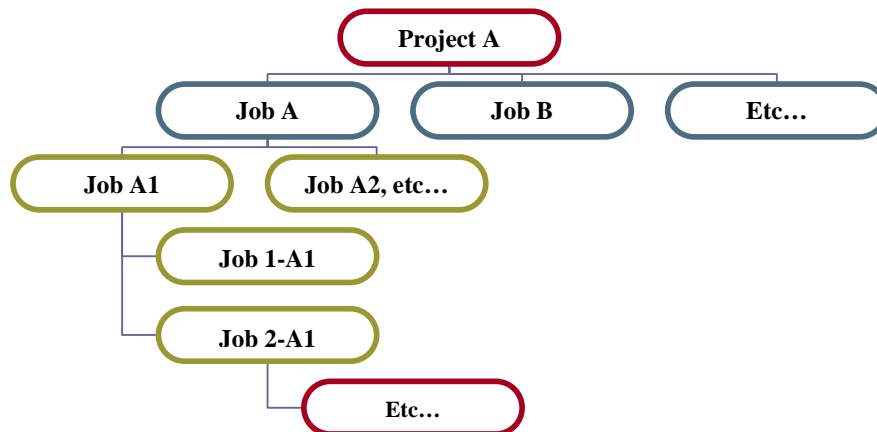


## Part I – General Features

<b>Introduction</b>	<ul style="list-style-type: none"><li>● Complete business solution designed to help users enhance their business management capabilities.</li><li>● Combines unlimited information collection and powerful innovative features.</li><li>● Developed using the latest Microsoft application technology.</li><li>● User-friendly &amp; easy to operate application</li><li>● Flexible features &amp; straight-forward functionality</li><li>● Clear, simple, and compatible structure</li><li>● Applicable to small, medium &amp; large size businesses</li><li>● Appropriate for industrial, trading, services, &amp; other sectors</li></ul>
<b>Technical Information</b>	<ul style="list-style-type: none"><li>● Developed under VB.Net &amp; SQL Server</li><li>● Operates under Win XP (sp1), 2000(sp3 or later), win server 2003, win 2000 server (sp3 or later), win NT4.0 (sp 6a)</li><li>● Client-server architecture</li></ul>
<b>System Integration</b>	eQual® is an integrated modular business application that combines financial accounting, Inventory management, production management, POS, CRM, Task manager, Desktop mail, Payroll & HR management.
<b>Integrations with MS</b>	As a VB.net application, eQual® operates in a homogenous MS windows environment enabling the user to convert any report into MS Word document or Excel worksheet.
<b>Backup &amp; Restoring Data</b>	Is a feature that enables the user to save existent data to any internal or external storage device and restore it back once required.
<b>System Administration</b>	Enables the administrator to define, for each user, a set of operational authorizations to control the access of financial years and companies, accessing of forms and reports, editing or deleting vouchers, accessing to costs, etc...
<b>Multi-User</b>	eQual® can run on single station or can be operated by many users through a local area network (LAN) or wide area network (WAN).

<b>Multi-Company</b>	eQual® maintains multiple number of companies with independent items, categories, warehouses, POS's, customers, suppliers & interface languages.
<b>Consolidated Reports</b>	The user is enabled to combine the balances of two or more companies or branches into a single consolidated report and obtain a wider picture of his company's financials.
<b>Multi-Fiscal Year</b>	eQual® holds an unlimited number of financial years under each listed company created in your database directory.
<b>Multi-Branch</b>	The user is enabled to manage and control unlimited number of branches operated under each company.
<b>Multi-Department &amp; Sub-Department</b>	eQual® enables the user to define multiple sets of departments and sub departments and hence distribute his business revenues/sales and expenditures/purchases simultaneously among them.
<b>Multi- Cost Center &amp; Sub- Cost Center</b>	eQual® enables the user to define multiple sets of cost centers and sub cost centers and hence distribute his business revenues/sales and expenditures/purchases simultaneously among them.

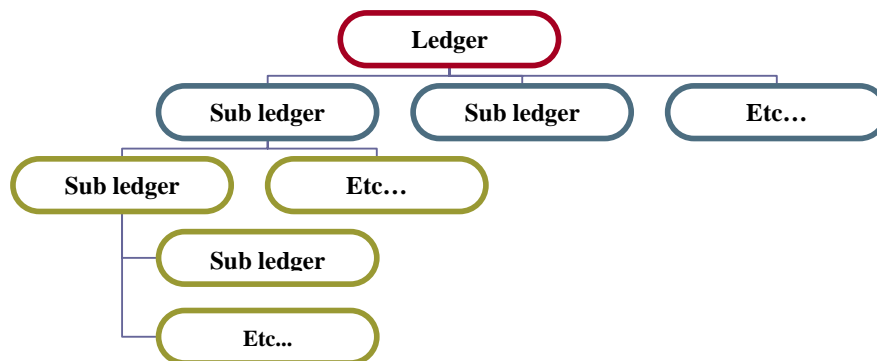


<b>Multi-Currency</b>	eQual® maintains unlimited number of currencies that allows the user to register his entries in the local currency as well as any other foreign currency.
-----------------------	---

- Double Basic Currency** eQual® simultaneously converts all entries into two basic currencies and enables the user to handle all posted transactions in three currencies (1<sup>st</sup> local basic currency, 2<sup>nd</sup> basic currency, and transaction currency) and therefore generates his reports with any selected currency.
- Currency Log file** Is an archive file that keeps the daily rates of the used currency and enables the user to retrieve any of the registered data at any period of time.
- Multi-Lingual** eQual® supports multiple languages (English, French, Arabic etc...) and enables the user to choose his desired interface language and change its layout at any time.
- Searching Engine** eQual® effectively helps the user track and find absolutely any transaction or entry wherever he was in the system.

## Part II – Accounting Management System

- Chart of Accounts** In addition to the system's built-in chart of accounts, user is entitled to define his own company's chart in any desirable languages.
- Sub-Accounts** eQual® allows the user to associate various sub accounts and currencies to certain ledgers and sub-ledgers (sub-accounts) and enhances his operational capabilities to additional sub levels.

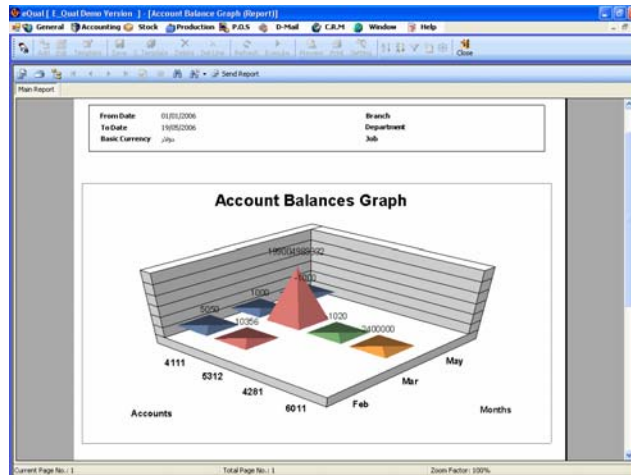


<b>Fixed Assets Management</b>	Helps the user generate a periodical update of all depreciations and asset balances at any point of time.
<b>Entry classification</b>	Is a feature that allows the user to classify his entries into 15 different voucher types such as general journal, opening & closing vouchers, debit & credit notes, exchange voucher, multi-currency voucher, cash & credit sales, cash & credit purchase, receipt & payment vouchers, sales & purchase return.
<b>Voucher Characteristics</b>	<ul style="list-style-type: none"><li>• Entries can be recorded in different currencies</li><li>• New ledger accounts can be defined during the entry process.</li><li>• Handle multiple entries of bills, cheques, note receivables or payables</li></ul>
<b>Credit Limits</b>	eQual® lets the user define his customers and suppliers credit limits and efficiently control their accounts through receiving regular alerts every time they exceed their limits.
<b>Accounts Inactivation</b>	Is a feature included in eQual® to inactivate any account or sub account and therefore prevent users from falling accidentally in possible errors during the process.
<b>Aging Analysis</b>	eQual® enables the user track any due payments and puts him in control of all his customers and suppliers collections and payments by a single click of the mouse.
<b>Reversing &amp; Recurring Transactions</b>	It is a utility feature that enables the user to automatically reverse or replicate any transaction and save it again under a new serial and date
<b>Automatic opening balances</b>	eQual® allows users to generate their opening vouchers for a single branch or for the entire company in a single click. in case of any discrepancy in the processed data, the user can revert those entries, edit them and re-generate the opening voucher again.

<b>Automatic Closing Balances</b>	Closing Income and expense accounts at the end of each fiscal year became an easy process and can be generated automatically in a single click. In case of any discrepancy in the processed data, the user can revert those entries, edit them and re-generate the closing voucher again.
<b>Exchange Rate Differences</b>	eQual® allows the user to automatically generate closing vouchers that adjusts the foreign currency accounts to the existing or required local rates
<b>Budgeting</b>	Through this module, eQual® helps users build their budgets with unparalleled simplicity and flexibility. Users are enabled to allocate their budget figures to ledgers, sub-accounts, departments, jobs, projects, and cost centers; and are also allowed to distribute fixed expenses automatically over the required months or to retrieve previous budgets and build on it.
<b>Post Dated Cheques</b>	eQual® allows the user to register post-dated cheques at the time of receipt and later processes them automatically upon due dates.
<b>Value Added Tax (VAT)</b>	is an optional feature available for companies operating under tax systems.
<b>Transaction Log File</b>	Is a feature where each processed transaction is documented and maintained into a log file.
<b>Specific Features</b>	<ul style="list-style-type: none"><li>● ten-digit-GL-codes</li><li>● eight-digit-sub account-code (Alphanumeric)</li><li>● eight-digit-Cost Center account-codes (Alphanumeric)</li><li>● Opening of new fiscal year prior to closing current years</li><li>● Automatic transfer of ledger and sub-account from one year to another.</li><li>● Automatic transfer of selected journal entries from one company to another</li></ul>

**Analytical graphic charts**

Allows the user generate comparative charts for a set of selected accounts.



**Task manager & Reminder**

eQual® is equipped with a task manager allowing users to schedule and set reminders for their daily and future tasks.

**Desktop Mail**

Is a mailing system allowing users to exchange emails with other users operating on the same software application.

**Reports**

Special consideration has been given to the reporting system to enable users generate data in the most accurate and practical way. "From – To" technique enables the user to generate an extremely wide and detailed range of correlated data and conversely enables him to narrow down his search to a precise and specific piece of information.

**Reports specifications**

- Data can be generated in local currency, second basic currency and actual transaction currency.
- Data can be generated by branch, department and project.
- Consolidated reports can be generated for existing branches.
- Reports can be generated with brought forward balances.
- Rich in functional analysis and charts.
- Reports can be displayed in PDF, XLS, & Doc forms.

**Report Layout**

Is a feature that entitles the user to re-design the existent reports and build his own layouts.

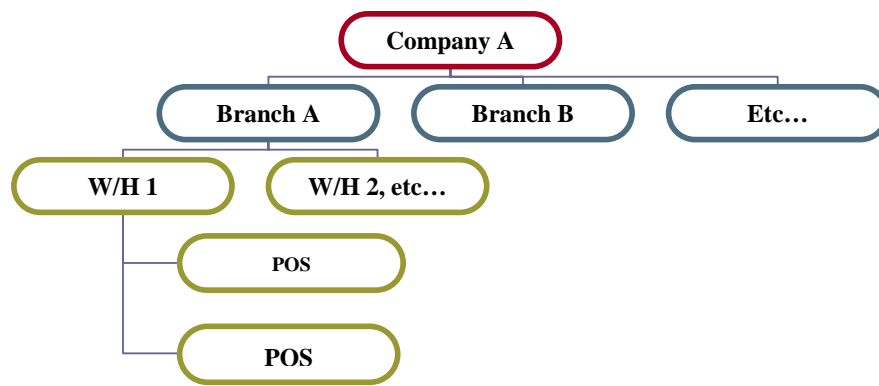
### Available Reports

- General ledger reports
- Daily journal reports
- Trial balance reports
- Comparative trial balance reports
- Periodical trial balance
- YTD trial balance
- Statement of account
- Income statement (P & L)
- Balance sheet reports
- Assets depreciation reports
- Aging reports
- Ledger and Sub-Accounts reports
- Statistical charts
- Cheques report
- Budget allocation reports
- Budget vs. Actual reports (Per Months & Years)
- Due invoices (Sales / Purchase)

### Part III - Inventory Management System

#### Multi-Warehouse & Point of Sales

eQual® enables the user to define and manage multiple number of warehouses & point of sales under each company or branch



#### Searching Engine

eQual® effectively helps the user track and find absolutely any item or entry wherever he was in the system.

#### Sub-items & Bundles

eQual® allows the user to associate various items to a certain key product on purpose of using them either as main parts of that particular product or as promotional items or bundles along with each sale. This process handles the movement of sub items and promotional bundles in an efficient way and keeps your stocks constantly updated with each completed transaction.

#### Entry Classification

Is a feature that allows the user to classify his entries into nine different types such as cash & credit sales, cash & credit purchase, transfer slips, adjustment slip, sales & purchase return.

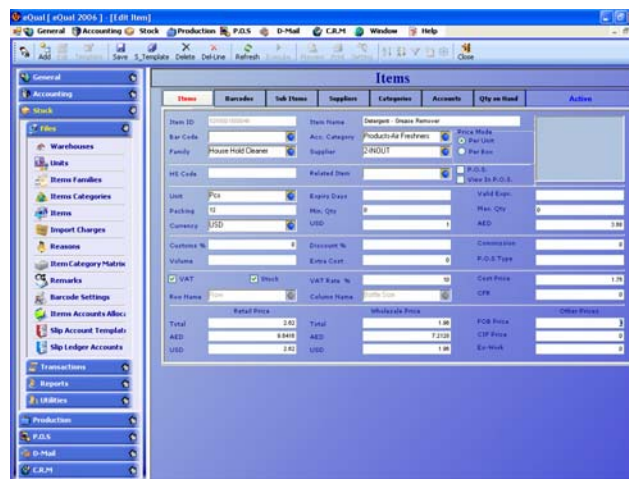
#### Account Classification

Is a feature that allows the user to classify his goods under certain ledgers or sub ledger and instantly post all his sales and purchases to these predefined accounts.

**Accounts Activation** Is a feature included in eQual® to activate / inactivate any account or sub account and therefore prevent users from falling accidentally in possible errors during the process.

**Item Category** Is a feature through which the user is entitled to group his stock items into different categories & sub categories.

**Bar coding** it is a feature that brings technology and simplicity into your warehouses through **automatic data collection** or **real-time data capture and exchange**. An **easy and accurate data entry method** that enables the user to **track the required products** and instantly generate his goods received and delivery notes and updates his stocks in a single click.



**Data Matrix** It is an innovative feature that manages different kinds of series stocks such as handling a product of different colors and sizes.

**Automatic opening balances** eQual® allows the users to create their opening stock slips for a single branch or multiple branches as well as creating consolidated opening balances in a single click.

**Import Charges Distribution** Is a costing module through which the user can automatically calculate the various import expenses and charges paid by the company and distribute them on the purchased goods.

**Specific Features**

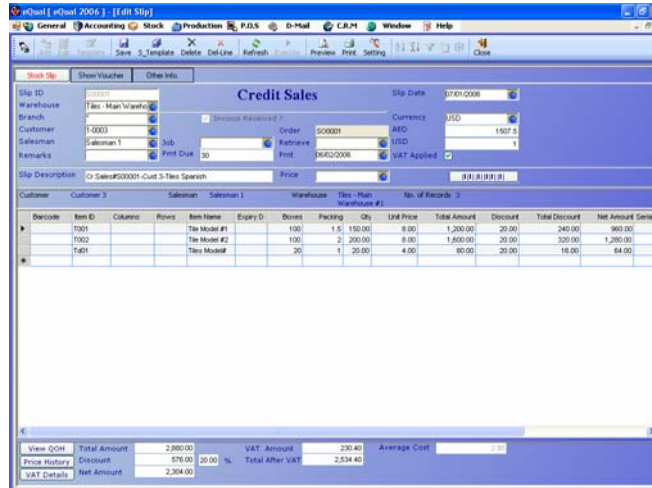
- Auto generating of accounting vouchers
- Alphanumeric item-code up to twenty digits
- Item picture embedment (JPG or GIF format)
- Managing of promotional packages & bundles
- Ability to import items from invoices templates
- Generating accounting vouchers form various stock slips
- Automatic transfer of items, categories, and accounts from one year to another.

**Managing  
Warehouses**

- Goods transfer between warehouses
- Stock adjustment & write off
- Minimum & maximum stock control
- Periodical inventory by cost price & expiry dates.
- Profit per item & warehouse
- Unlimited user-defined tree structured items
- Managing partial unpacking operations
- Managing consignment operations
- Tracking expiry dates and serial numbers
- Item's history with former prices
- Profit per warehouse

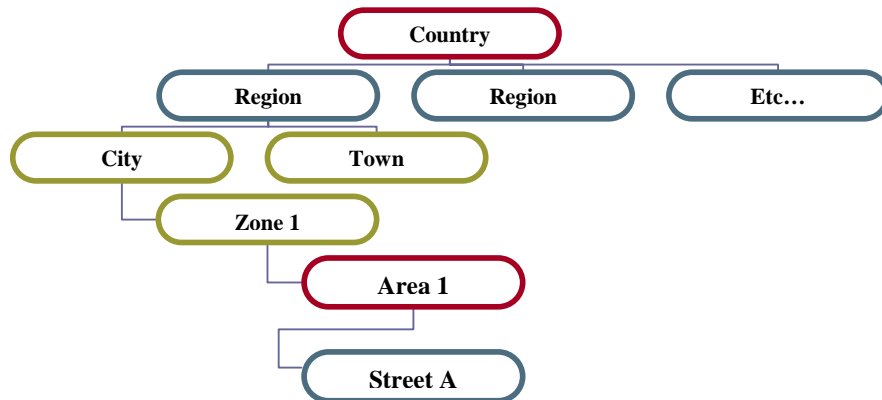
**Managing  
Sales**

- Sales deliveries initiated from different warehouses in a single transaction
- Sales by retail price, wholesale price, or last customer price
- Profit per invoice, item, salesman & customer
- Discount per item or total invoice value
- Sales and delivery orders
- Proforma invoices
- Cash & credit sales
- Sale return handling
- Invoice printing on plain paper or pre-printed form



**Locations**

Is a feature that enables the user to organize his customers and suppliers as per their locations



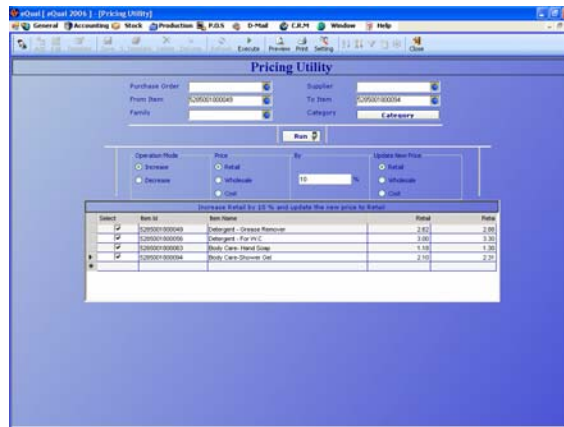
**Managing Purchases**

- Purchases by last purchased price or last supplier price
- Distributing goods received to different warehouses in a single transaction
- Accumulated average cost
- Purchases by last Purchased price or last supplier price
- Weighted average cost
- Reordering level module
- Purchase order
- Import expense allocation on purchased goods
- Goods received notes

- Cash & credit purchase
- Purchase return handling

### Pricing Module

Is a utility feature that enables the user to add his mark ups on received goods as well as increasing or decreasing existing prices of required items.



### Managing Clients & Vendors Accounts

Is a feature where users can define the credit limit allowed to each customer and supplier and efficiently control their accounts through receiving regular alerts every time they exceed their limits

### Sales Commission

it is a feature where eQual® entitles the user to apply an automatic commissions on sales.

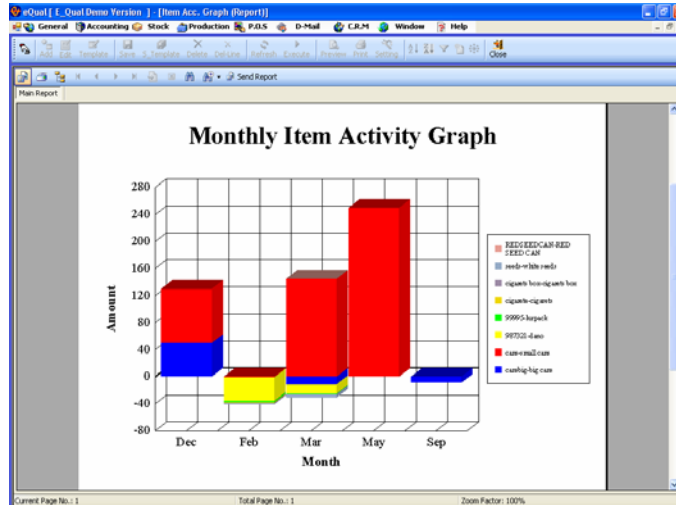
### Discounts

it is a feature where eQual® entitles the user to apply his discount policy in four different ways:

1. Automatic discount applied by customer and supplier.
2. Discount per Item applied by percentage rate.
3. Lump discount applied per item
4. Lump discount applied per invoice

### Analytical graphic charts

Allows the user to generate comparative charts for a set of selected items.



### System Reports

Special consideration has been given to the reporting system to enable users generate data in the most accurate and practical way. "From – To" technique enables the user to generate an extremely wide and detailed range of correlated data and conversely enables him to narrow down his search to a precise and specific piece of information.

### Reports specifications

- Data can be generated in local currency, second basic currency and actual transaction currency.
- Data can be generated by branch, department and project.
- Consolidated reports can be generated for existing branches.
- Reports can be generated with brought forward balances.
- Rich in functional analysis and charts.
- Reports can be displayed in PDF, XLS, & Doc forms.

### Available Reports

- Daily journal reports
- Profit analysis reports by:
  - a) Invoice
  - b) Period (From Date - To Date)
  - c) Day by Day
  - d) Month by Month
  - e) Customer
  - f) Sales person

- Sales Reports By
  - a) Area
  - b) Sales Person
  - c) Customer
- Item Information Reports
- Item Activity Reports
- Item Price List
- Suppliers Last Prices Report
- Customers Last Prices Report
- Item Sales Analysis Reports
- Monthly Sales Analysis Reports By
  - a) Sales Persons (Month By Month)
  - b) Item (Month By Month)
  - c) Customers (Month By Month)
  - d) Areas (Month By Month)
  - e) Families (Month By Month)
- Movement Analysis Report
- Monthly Sales and Purchases Reports
- Inventory Reports By
  - a) Item Last Cost
  - b) Item Average Cost
- Inventory by Expiry Dates
- Warehouse Activity Reports
- Customer Activity Reports-
- Supplier Activity Reports
- Sales Persons Activity Reports
- Statistical Charts for Comparative Sales and Purchases
- Commission Reports Based on
  - a) Invoicing
  - b) Settled Invoices
  - c) Sales Margins