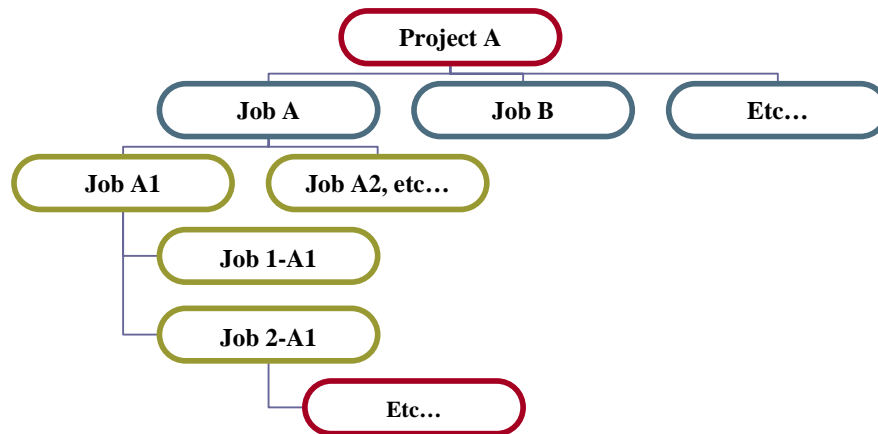


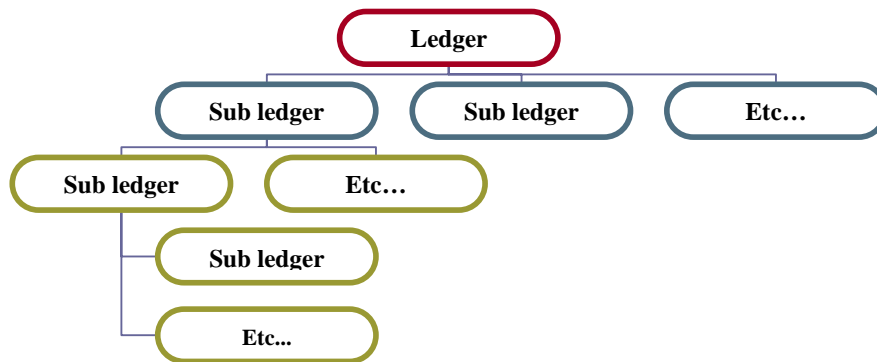
<b>Application</b>	<b>Accounting Management System</b>
<b>Introduction</b>	<ul style="list-style-type: none"><li>● Complete business solution designed to help users enhance their business management capabilities.</li><li>● Combines unlimited information collection and powerful innovative features.</li><li>● Developed using the latest Microsoft application technology.</li><li>● User-friendly &amp; easy to operate application</li><li>● Flexible features &amp; straight-forward functionality</li><li>● Clear, simple, and compatible structure</li><li>● Applicable to small, medium &amp; large size businesses</li><li>● Appropriate for industrial, trading, services, &amp; other sectors</li></ul>
<b>Technical Information</b>	<ul style="list-style-type: none"><li>● Developed under VB.Net &amp; SQL Server</li><li>● Operates under Win XP (sp1), 2000(sp3 or later), win server 2003, win 2000 server (sp3 or later), win NT4.0 (sp 6a)</li><li>● Client-server architecture</li><li>● Integrated with all other silicon packages</li><li>● User is enabled to build his own reports &amp; queries</li></ul>
<b>System Integration</b>	eQual® is an integrated modular business application that combines financial accounting, Inventory management, production management, POS, CRM, Task manager, Desktop mail, Payroll & HR management.
<b>Integrations with MS</b>	As a VB.net application, eQual® operates in a homogenous MS windows environment enabling the user to convert any report into MS Word document or Excel worksheet.
<b>Backup &amp; Restoring Data</b>	Is a feature that enables the user to save existent data to any internal or external storage device and restore it back once required.
<b>System Administration</b>	Enables the administrator to define, for each user, a set of operational authorizations to control the access of financial years and companies, accessing of forms and reports, editing or deleting vouchers, accessing to costs, etc...
<b>Multi-User</b>	eQual® can run on single station or can be operated by many users through a local area network (LAN) or wide area network (WAN).

<b>Multi-Company</b>	eQual® maintains multiple number of companies with independent items, categories, warehouses, POS's, customers, suppliers & interface languages.
<b>Consolidated Reports</b>	The user is enabled to combine the balances of two or more companies or branches into a single consolidated report and obtain a wider picture of his company's financials.
<b>Multi-Fiscal Year</b>	eQual® holds an unlimited number of financial years under each listed company created in your database directory.
<b>Multi-Branch</b>	The user is enabled to manage and control unlimited number of branches operated under each company.
<b>Multi-Department &amp; Sub-Department</b>	eQual® enables the user to define multiple sets of departments and sub departments and hence distribute his business revenues and expenditures simultaneously among them.
<b>Multi- Cost Center &amp; Sub- Cost Center</b>	eQual® enables the user to define multiple sets of cost centers and sub cost centers and hence distribute his business revenues and expenditures simultaneously among them.



<b>Multi-Currency</b>	eQual® maintains unlimited number of currencies that allows the user to register his entries in the local currency as well as any other foreign currency.
<b>Double Basic Currency</b>	eQual® simultaneously converts all entries into two basic currencies and enables the user to handle all posted transactions in three currencies (1 <sup>st</sup> local basic currency, 2 <sup>nd</sup> basic currency, and transaction currency) and therefore generates his reports with any selected currency.

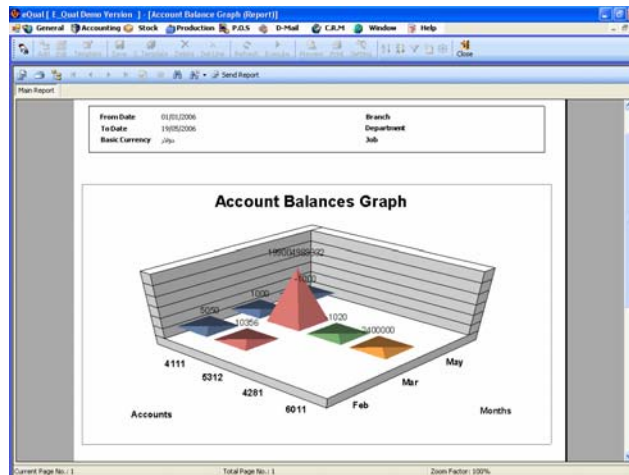
<b>Currency Log file</b>	Is an archive file that keeps the daily rates of the used currency and enables the user to retrieve any of the registered data at any period of time.
<b>Multi-Lingual</b>	eQual® supports multiple languages (English, French, Arabic etc...) and enables the user to choose his desired interface language and change its layout at any time.
<b>Searching Engine</b>	eQual® effectively helps the user track and find absolutely any transaction or entry wherever he was in the system.
<b>Chart of Accounts</b>	In addition to the system's built-in chart of accounts, user is entitled to define his own company's chart in any desirable languages.
<b>Sub-Accounts</b>	eQual® allows the user to associate various sub accounts and currencies to certain ledgers and sub-ledgers (sub-accounts) and enhances his operational capabilities to additional sub levels.



<b>Fixed Assets Management</b>	Helps the user generate a periodical update of all depreciations and asset balances at any point of time.
<b>Report Layout</b>	Is a feature that entitles the user to re-design the existent reports and build his own layouts.
<b>Entry classification</b>	Is a feature that allows the user to classify his entries into 15 different voucher types such as general journal, opening & closing vouchers, debit & credit notes, exchange voucher,

	multi-currency voucher, cash & credit sales, cash & credit purchase, receipt & payment vouchers, sales & purchase return.
<b>Voucher Characteristics</b>	<ul style="list-style-type: none"><li>• Entries can be recorded in different currencies</li><li>• New ledger accounts can be defined during the entry process.</li><li>• Handle multiple entries of bills, cheques, note receivables or payables</li></ul>
<b>Credit Limits</b>	eQual® lets the user define his customers and suppliers credit limits and efficiently control their accounts through receiving regular alerts every time they exceed their limits.
<b>Accounts Inactivation</b>	Is a feature included in eQual® to inactivate any account or sub account and therefore prevent users from falling accidentally in possible errors during the process.
<b>Aging Analysis</b>	eQual® enables the user track any due payments and puts him in control of all his customers and suppliers collections and payments by a single click of the mouse.
<b>Reversing &amp; Recurring Transactions</b>	It is a utility feature that enables the user to automatically reverse or replicate any transaction and save it again under a new serial and date
<b>Automatic opening balances</b>	eQual® allows users to generate their opening vouchers for a single branch or for the entire company in a single click. In case of any discrepancy in the processed data, the user can revert those entries, edit them and re-generate the opening voucher again.
<b>Automatic Closing Balances</b>	Closing Income and expense accounts at the end of each fiscal year became an easy process and can be generated automatically in a single click. In case of any discrepancy in the processed data, the user can revert those entries, edit them and re-generate the closing voucher again.
<b>Exchange Rate Differences</b>	eQual® allows the user to automatically generate closing vouchers that adjust the foreign currency accounts to the existing or required local rates
<b>Budgeting</b>	Through this module, eQual® helps users build their budgets with unparalleled simplicity and flexibility. Users are enabled to allocate their budget figures to ledgers, sub-accounts, departments, jobs, projects, and cost centers; and are also allowed to distribute fixed expenses automatically over the required months or to retrieve previous budgets and build on it.

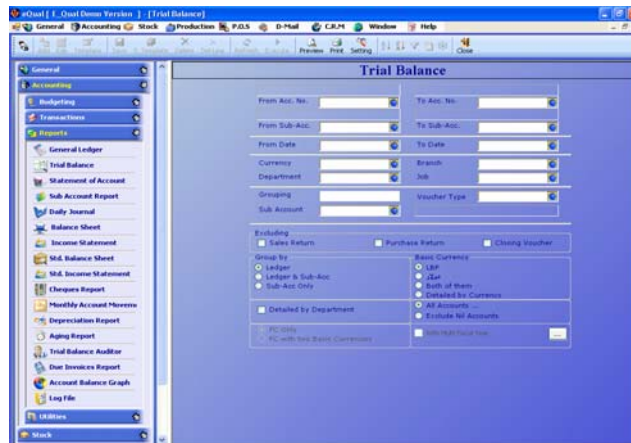
- Post Dated Cheques** eQual® allows the user to register post-dated cheques at the time of receipt and later processes them automatically upon due dates.
- Value Added Tax (VAT)** is an optional feature available for companies operating under tax systems.
- Transaction Log File** Is a feature where each processed transaction is documented and maintained into a log file.
- Specific Features**
- ten-digit-GL-codes
  - eight-digit-sub account-code (Alphanumeric)
  - eight-digit-Cost Center account-codes (Alphanumeric)
  - Opening of new fiscal year prior to closing current years
  - Automatic transfer of ledger and sub-account from one year to another.
  - Automatic transfer of selected journal entries from one company to another
- Analytical graphic charts** Allows the user generate comparative charts for a set of selected accounts.



- Task manager & Reminder** eQual® is equipped with a task manager allowing users to schedule and set reminders for their daily and future tasks.
- Desktop Mail** Is a mailing system allowing users to exchange emails with other users operating on the same software application.

### Reports

Special consideration has been given to the reporting system to enable users generate data in the most accurate and practical way. "From – To" technique enables the user to generate an extremely wide and detailed range of correlated data and conversely enables him to narrow down his search to a precise and specific piece of information.



### Reports specifications

- Data can be generated in local currency, second basic currency and actual transaction currency.
- Data can be generated by branch, department and project.
- Consolidated reports can be generated for existing branches.
- Reports can be generated with brought forward balances.
- Rich in functional analysis and charts.
- Reports can be displayed in PDF, XLS, & Doc forms.

### Available Reports

- General ledger reports
- Daily journal reports
- Trial balance reports
- Comparative trial balance reports
- Periodical trial balance
- YTD trial balance
- Statement of account
- Income statement (P & L)
- Balance sheet reports
- Assets depreciation reports
- Aging reports
- Ledger and Sub-Accounts reports
- Statistical charts
- Cheques report
- Budget allocation reports
- Budget vs. Actual reports (Per Months & Years)
- Due invoices (Sales / Purchase)