

Accounting & Inventory Management System

Table of Contents

● GENERAL FEATURES	3
● INTRODUCTION	3
● TECHNICAL INFORMATION	3
● SYSTEM INTEGRATION	3
● INTEGRATION WITH MS APPLICATIONS	3
● DATA BACKUP AND RESTORING	3
● SYSTEM ADMINISTRATION	3
● MULTI - USER	3
● MULTI - COMPANY	4
● CONSOLIDATED REPORTS	4
● MULTI-FISCAL YEAR	4
● MULTI-BRANCH	4
● MULTI-DEPARTMENT	4
● MULTI-COST CENTER	4
● MULTI-CURRENCY	5
● DOUBLE BASIC CURRENCY	5
● CURRENCY HISTORY	5
● MULTI- LINGUAL	5
● SEARCHING ENGINE	5
● REMINDERS	5
● DESKTOP E-MAIL SYSTEM	5
● ACCOUNTING MANAGEMENT SYSTEM	
● CHART OF ACCOUNTS	6
● SUBSIDIARY-ACCOUNTS	6
● ACCOUNTS INACTIVATION	6
● CREDIT LIMITS	6
● PAYMENT TERMS	6
● AGING ANALYSIS	6
● FIXED ASSETS	7
● VOUCHER CLASSIFICATION	7
● VOUCHER CHARACTERISTICS	7
● REVERSING AND RECURRING VOUCHERS	7
● OPENING BALANCES	8
● CLOSING BALANCES	8
● EXCHANGE RATE DIFFERENCES	8
● BUDGETING	9
● CHEQUES MANAGEMENT	9
● VALUE ADDED TAX	9
● TRANSACTIONS LOG FILE	9
● OTHER FEATURES AND UTILITIES	9

Accounting & Inventory Management System

- GRAPHICAL CHARTS 10
- **INVENTORY MANAGEMENT SYSTEM**
- MULTI-WAREHOUSE 10
- SUB ITEMS AND BUNDLES 11
- ENTRY CLASSIFICATION 11
- ITEM ACCOUNT CLASSIFICATION 11
- ITEMS INACTIVATION 11
- ITEM CATEGORY 11
- BAR CODING 12
- DATA MATRIX 12
- OPENING STOCKS 12
- DISTRIBUTION OF IMPORT CHARGES 13
- SPECIFIC FEATURES 13
- MANAGING WAREHOUSES 13
- MANAGING SALES 13
- MANAGING PURCHASES 14
- LOCATIONS 15
- MANAGING CLIENTS ACCOUNTS 15
- MANAGING VENDORS ACCOUNTS 15
- PRICING MODULE 15
- SALES COMMISSION 15
- DISCOUNTS 16
- GRAPHICAL CHARTS 16
- **SYSTEM REPORTS** 16 - 18

Accounting & Inventory Management System

Part I – General Features

Introduction

- Developed by **Silicon Computer Systems sarl**, winners of the **Golden chip awards** for the best locally developed software.
- Complete business solution designed to help users enhance their business management capabilities.
- Combines unlimited information collection and powerful innovative features.
- Creates seamless technology integration across the business.
- Developed using the latest Microsoft application technology.
- User-friendly and easy to operate application
- Flexible features and straight-forward functionality
- Clear, simple and compatible structure
- Applicable to small, medium and large size businesses
- Appropriate for industrial, trading, services and other sectors

Technical Information

- Developed under VB.Net, ASP.Net and SQL Server 2005
- Operates under Win XP (sp1), Win 2000(sp3 or later), Win Server 2003, Win 2000 Server (sp3 or later), Win NT4.0 (sp 6a)
- Client-server architecture

System Integration

eQual® is an integrated modular application that Combines financial accounting, budgeting, inventory management, payroll management, production management, POS, LC management, cheque management, reminder system, Desk mail.

Integrations with Microsoft Application

eQual® operates in a homogenous MS windows environment enabling the user to convert any report into word document, excel worksheet, rich text, or PDF.

Backup and Restoring

Is a feature that enables the user to save the existent data to any internal or external storage device and restore it back once required.

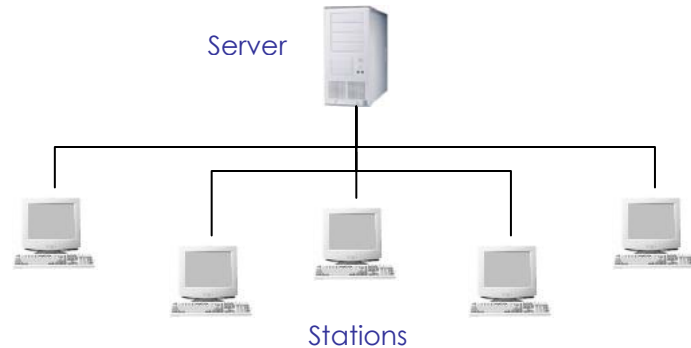
System Administration

Enables the administrator to define, for each user or group of users, a set of operational authorizations that control the access to the different parts and modules of the system such as accessing financial years and companies, accessing forms and reports, editing or deleting vouchers, accessing costs, etc...

Multi-User

eQual® can run on single station or can be operated by many users through a local area network (LAN) or wide area network (WAN).

Accounting & Inventory Management System



Multi-Company

eQual® maintains multiple number of companies with independent ledgers, items, categories, warehouses, customers, suppliers and interface languages.

Consolidated Reports

Is a utility where users are enabled to combine the balances of two or more branches or companies into a single consolidated report.

Multi-Fiscal Years

eQual® is enabled to hold unlimited number of financial years under each company registered in the database directory.

Multi-Branch

The user is enabled to define, manage and control unlimited number of branches operating under each company.

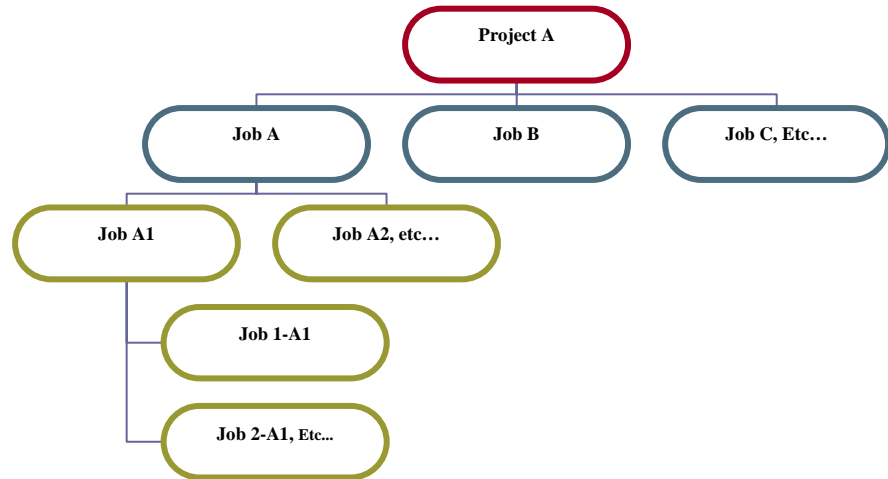
Multi-Department and Sub-Department

eQual® enables the user to define multiple set of departments and sub departments and therefore post the business revenues and expenditures simultaneously among them.

Multi- Cost Center and Sub- Cost Center

eQual® also enables the user to define multiple set of cost centers and sub cost centers and consequently distribute the various expenditures among them.

Accounting & Inventory Management System



Multi-Currency

eQual® maintains unlimited number of currencies that allow the user to record his entries in the local currency as well as other foreign currencies listed in the currency file.

Double Basic Currency

eQual® simultaneously converts all entries into two basic currencies and enables the user to post all transactions in three currencies (1st local basic currency, 2nd basic currency, and transaction currency) and therefore generates his reports in any selected currency.

Currency History

Is a log file that maintains the daily currency rates and therefore enables the user to record any transaction with a previous date at the rate that was recorded in that particular date.

Multi-Lingual

eQual® supports multiple languages with homogenous layout such as English - Arabic, French – Arabic, etc...

Searching Engine

eQual® effectively helps the user track and find absolutely any account, transaction or entry wherever he was in the system.

Reminders

It is another feature that allows users to easily handle their day-to-day work. Through this module, users are allowed to schedule their daily and future tasks and follow up on them at later stages through the regular reminders eQual® is equipped with.

Desk Mail

Is an e-mail system allowing users to exchange mails and reports with other users operating on the same software application.

Accounting & Inventory Management System

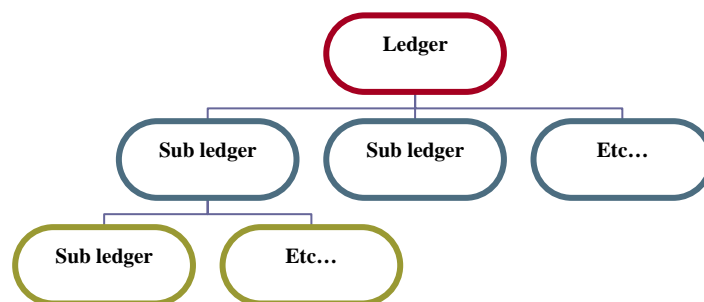
Part II – Accounting Management System

Chart of Accounts

In addition to the system's built-in chart of accounts, the user is also entitled to define his own company's chart of accounts in any desirable language.

Sub-Accounts

eQual® allows the user to associate various sub accounts and currencies to certain ledgers and sub-ledgers (sub-accounts) and enhances his operational capabilities to additional sub levels.



Accounts Deactivation

Is a feature included in eQual® to deactivate any account or sub account and thus prevent users from selecting the inactive accounts any fall accidentally in errors during booking their transactions.

Credit Limits and Payment Terms

eQual® allows the user to define the credit limits and payment terms of his customers and suppliers and efficiently control their accounts through receiving regular alerts every time a limit is exceeded or a payment is due.

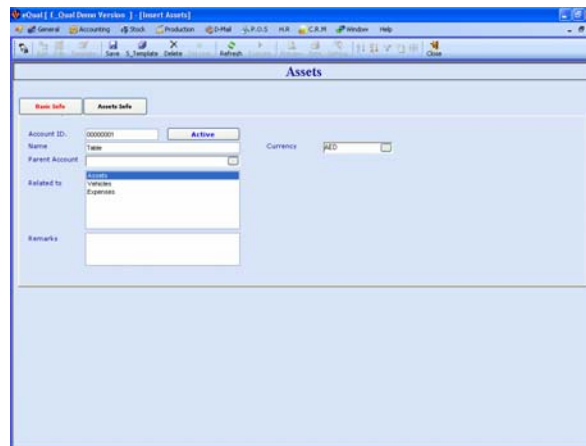
Aging Analysis

eQual® enables the user to track due payments and puts him in control of all his receivables and payables by a single click of the mouse.

Accounting & Inventory Management System

Fixed Asset Management

Is a feature that helps the user at any point of time to generate a periodical asset depreciation sheet and accordingly post the depreciated values to its particular accounts.



Voucher Classification and Characteristics

Is a feature that allows the user to classify his entries into 15 different vouchers types such as general journal, opening and closing vouchers, debit and credit notes, exchange voucher, multi-currency voucher, cash and credit sales, cash and credit purchase, receipt and payment vouchers, sales and purchase returns vouchers.

- User can create a multi currency voucher in which he can record his entries of different currencies in one voucher.
- New ledger accounts can be defined during the entry process.
- Handle multiple entries of bills, cheques, notes receivable or payable
- Ten-digit-GL-codes
- Eight-digit-sub account-code (Alphanumeric)
- Eight-digit-Cost Center -codes (Alphanumeric)

Sub Vouchers

Is another feature that gives the user further flexibility while using the System. The user can create multiple vouchers under each main voucher with a purpose of classifying his entries into as many vouchers as required. Ex: petty cash vouchers, bank payment vouchers, etc...

Reversing Entries

It is a utility feature that enables the user to automatically reverse an existing entry and save it under a new serial number and date.

Accounting & Inventory Management System

Recurring Entries

It is a utility feature that enables the user to automatically replicate an existing entry and save it under a new serial number and date

Automatic opening

opening vouchers can be generated either for individual branches or the entire company in a single click. Any discrepancies can simply be corrected by reversing the processed entries, editing them and re-generating the opening voucher again.

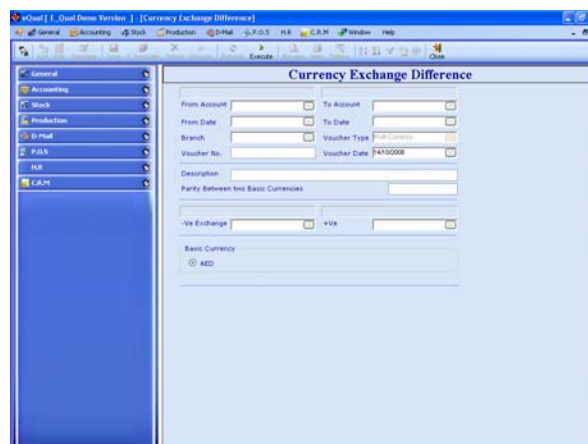


Automatic Closing Balances

Closing income and expense accounts at the end of each fiscal year has become an easy process and can be generated automatically in a single click. However, in case of discrepancies in the processed data, the user can reverse those entries, edit them and re-generate the closing voucher again.

Exchange Rate Differences

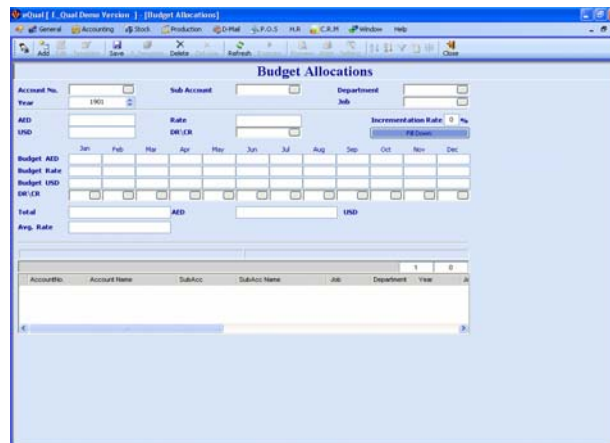
eQual® allows the user to automatically generate closing vouchers that adjust the foreign currency accounts to the existing or required local rates



Accounting & Inventory Management System

Budgeting

Through this module, eQual® helps users build their budgets with unparalleled simplicity and flexibility. Users are enabled - 1) to allocate their budget figures to ledgers, sub-accounts, departments, jobs, projects, and cost centers -2) to automatically distribute the fixed expenses over the required months - 3) to retrieve previous budgets and rebuild them.



Cheques Management

Is a module through which users can easily process, print and manage the flow of received and issued cheques such as PDC, returned cheques, outstanding cheques, etc...

Value Added Tax

is a feature available for companies operating under VAT systems where eQual® automatically calculates tax values and generates the relevant reports.

Transactions Log File

Is a feature where each processed transaction is documented and maintained into a log file that records entries by user name, date and time of processing, entry type and process description.

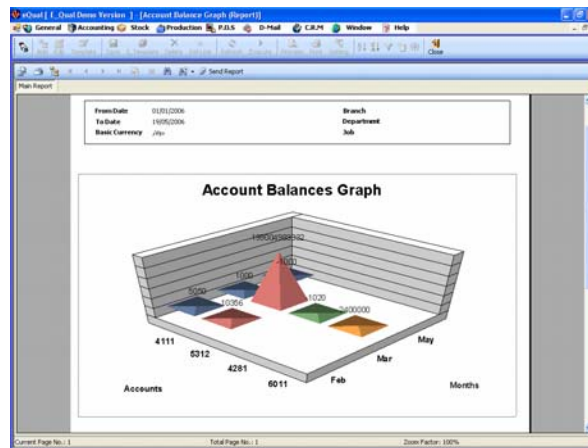
Other Features

- Opening of new fiscal year prior to closing current years
- Automatic transfer of master files from one year to another.
- Automatic transfer of selected entries from one company to another.
- Automatic change of ledgers and sub ledgers from one account to another.
- Automatic change of voucher types and numbers to new sequence.

Accounting & Inventory Management System

Graphic Charts

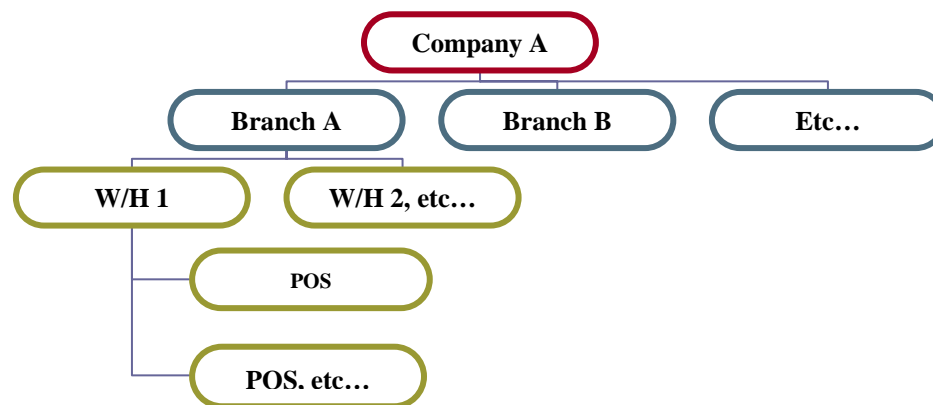
Allows the user to generate comparative charts for a set of selected accounts, sub accounts and months.



Part III - Inventory Management System

Multi-Warehouse and Point of Sales

eQual® enables the user to define and manage multiple number of warehouses and point of sales under each branch or company.



Accounting & Inventory Management System

Sub-Items and Bundles

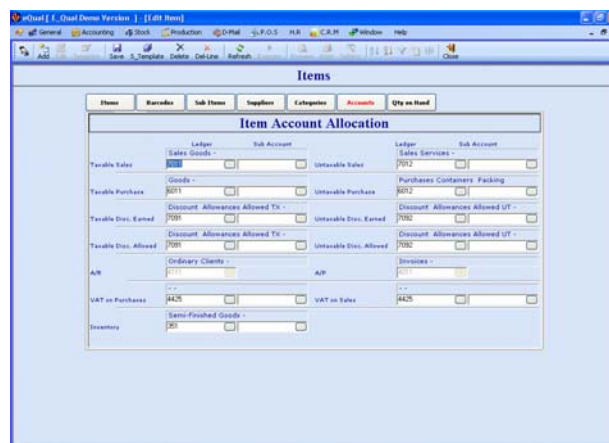
eQual® allows the user to associate various items to a certain key product with the purpose of utilizing them as main parts of that particular product, or as promotional items or bundles along with each sale. This process handles the movement of sub items and bundles in an efficient way and keeps your stocks constantly updated upon the completion of each entry.

Entry Classification

Is a feature that allows the user to classify his entries into nine different types such as cash and credit sales, cash and credit purchase, transfer slips, adjustment slip, sales and purchase return.

Item Account Classification

Is a feature that allows the user to classify his existent goods, services, etc... under certain ledgers or sub ledgers and automatically post all its relevant sales and purchases to those predefined accounts.



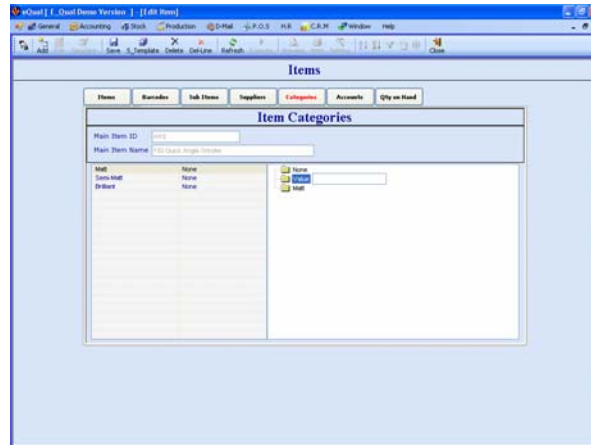
Accounts Deactivation

Is a feature included in eQual® to deactivate any account or sub account and thus prevent users from selecting the inactive accounts any fall accidentally in errors during booking their transactions.

Item Category

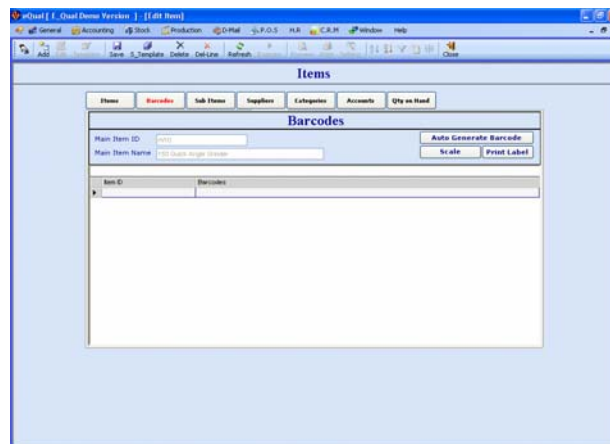
Is an extremely powerful and impressive feature that entitles users to group their stock items into various and unlimited number of categories, classes, locations, values, groups, etc...

Accounting & Inventory Management System



Bar coding system

it is a system that brings technology and simplicity into your warehouses through automatic data collection or real-time data capture and exchange. It is an easy and accurate method that enables users through using data collectors devices to automatically generate their goods received notes and delivery orders and update their stocks immediately once the goods are received or delivered.



Data Matrix

It is an inventive feature that manages the series stocks such as stocks of different colors and sizes.

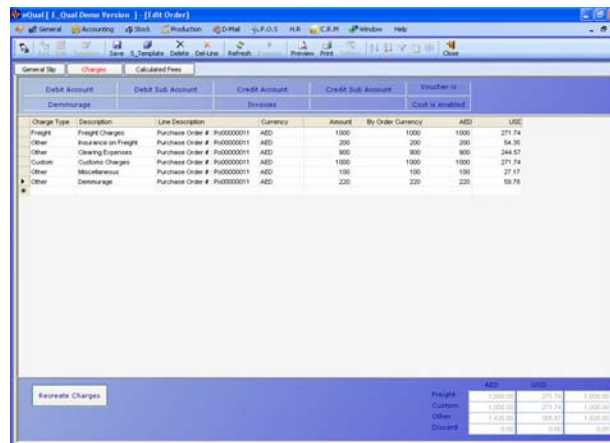
Automatic opening balances

eQual® enables users to independently generate their opening stock slip for single or multiple branches or fiscal years in a single click.

Accounting & Inventory Management System

Import Charges Distribution

Is a costing module through which the user can automatically distribute the various import expenses and charges over the initial cost of the purchased goods.



Charge Type	Description	Line Description	Currency	Amount	By Order	Currency	AED	USD
Freight	Freight Charges	Purchase Order # Pu00000011	AED	1000	1000	1000	271.74	
Other	Insurance on Freight	Purchase Order # Pu00000011	AED	200	200	200	54.95	
Other	Cleaning Expenses	Purchase Order # Pu00000011	AED	900	900	900	244.67	
Custom	Customs Charges	Purchase Order # Pu00000011	AED	1000	1000	1000	271.74	
Other	Maintenance	Purchase Order # Pu00000011	AED	100	100	100	27.17	
Other	Demurrage	Purchase Order # Pu00000011	AED	220	220	220	59.78	

	AED	USD
Freight	271.74	73.50
Custom	271.74	73.50
Other	549.94	149.57
Discount	0.00	0.00

Specific Features

- Auto generating of accounting vouchers
- Alphanumeric item-code up to twenty digits
- Item picture embedment (JPG or GIF format)
- Managing of promotional packages and bundles
- Ability to import items from invoices templates
- Generating accounting vouchers from various stock slips
- Automatic transfer of items, categories, and accounts from one year to another.

Managing Warehouses

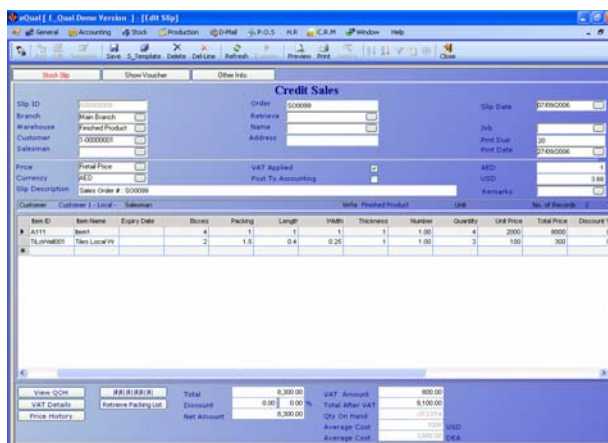
- Goods transfer between warehouses
- Stock adjustment and write off
- Minimum and maximum stock control
- Periodical Inventory by cost price and expiry dates.
- Profit per item, customer, invoice and warehouse
- Managing partial unpacking operations
- Controlling consignment stocks
- Tracking expiry dates and serial numbers
- Item's history with former prices
- Reminder system to control desirable stock levels

Managing Sales

- Sales deliveries initiated from different warehouses in a single transaction
- Invoice with multi & single deliveries
- Sales by retail price, wholesale price, or last customer price
- Profit per invoice, item, salesman and customer
- Discount per item or total invoice value
- Sales and delivery orders
- Proforma invoices

Accounting & Inventory Management System

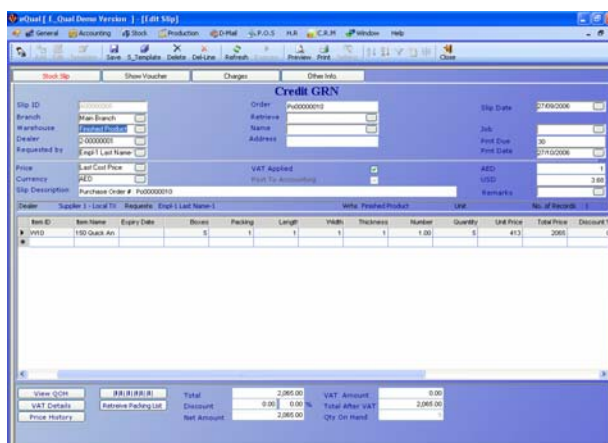
- Quotations
- Cash and credit sales
- Sales return handling
- Invoice printing on plain paper or pre-printed form



Item ID	Item Name	Expiry Date	Boxes	Packing	Length	Width	Thickness	Number	Quantity	Unit Price	Total Price	Discount
A111	Beet		4	1	1	1	1.00	4	2000	8000		
PL000001	Thin Local		2	1.5	0.4	0.25	1	100	300			

Managing Purchases

- Purchases by last purchased price or last supplier price
- Distributing goods received to different warehouses in a single transaction
- Purchase slip with multi & single goods received note
- Accumulated average cost
- Weighted average cost
- Stock replenishment system
- Reordering level reminders
- Purchase order
- Import expense allocation on purchased goods
- Goods received notes
- Cash and credit purchase
- Purchase return handling

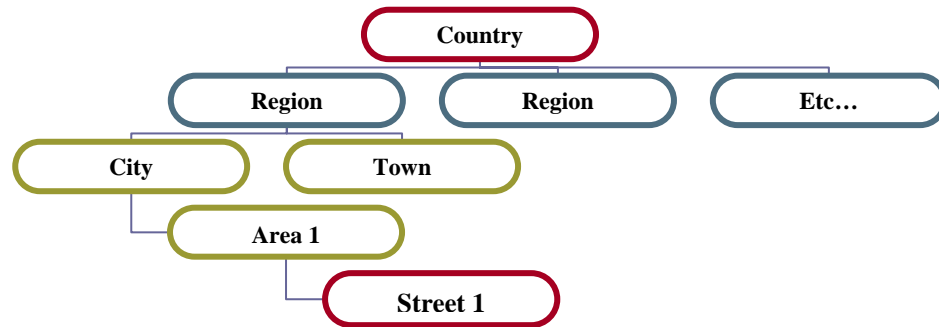


Item ID	Item Name	Expiry Date	Boxes	Packing	Length	Width	Thickness	Number	Quantity	Unit Price	Total Price	Discount
PL000	100 Quack		5	1	1	1	1.00	5	400	2000		

Accounting & Inventory Management System

Locations

Is a feature that enables the user to organize his customers and suppliers as per their locations

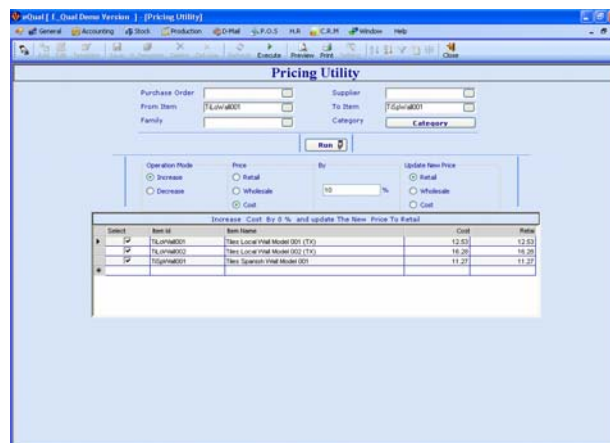


Managing Clients and Vendors Accounts

Is a feature where users can define the payment term and credit limit to each customer and supplier and efficiently control their accounts through receiving regular alerts every time a limit is exceeded or a payment is due.

Pricing Module

Is a utility feature that enables the user to add his mark ups on purchased goods or to reduce existing prices of selected items.



Sales Commission

it is a feature where eQual® entitles the user to apply an automatic commissions on sales.

Accounting & Inventory Management System

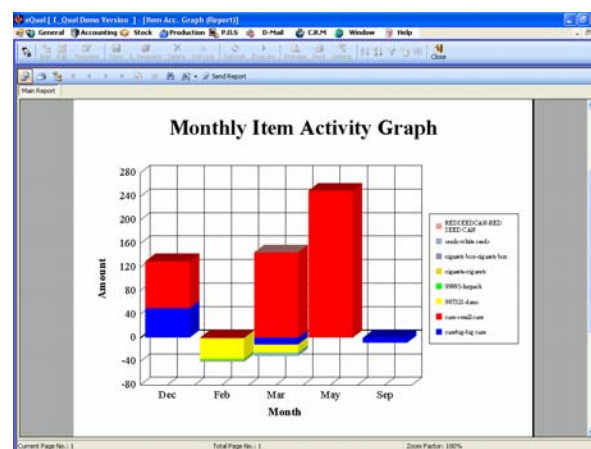
Discounts

It is a feature where eQual® entitles the user to apply his discount policy in four different ways:

1. Automatic discount applied by customer and supplier.
2. Discount by ratio applied on single items.
3. Lump discount applied per item
4. Lump discount applied per invoice

Graphic Charts

Allows the user to generate comparative charts for a set of selected items.



Part IV - System Reports

Special consideration has been given to the reporting system to enable users generate their reports in the most accurate and viable way. "From – To" technique enables the user to generate an extremely wide and detailed range of correlated data and conversely enables him to narrow down his search to a precise and specific piece of information.

Financial Reports specifications

- Data can be generated in local currency, second basic currency and actual transaction currency.
- Data can be generated by branch, department and cost center.
- Consolidated reports can be generated for existing branches.
- Reports can be generated with brought forward balances.
- Rich in functional analysis and charts.
- Reports can be displayed in PDF, XLS, rich text and word document forms.
- Users are enabled to conveniently re-design the existing reports.

Accounting & Inventory Management System

Available Financial Reports

- General ledger reports
- Daily journal reports
- Trial balance reports
- Comparative trial balance reports
- Periodical trial balance
- YTD trial balance
- Statement of account
- Income statement (P and L)
- Balance sheet reports
- Assets depreciation reports
- Aging reports
- Sub-Accounts reports
- Statistical charts
- Cheques' reports
- Budget allocation reports
- Budget vs. Actual reports (Per Months and Years)
- Due invoices (Sales / Purchase)
- Monthly accounts movement report

Stocks Reports Specifications

- Data can be generated in local currency, second basic currency and actual transaction currency.
- Data can be generated by branch, department and project.
- Consolidated reports can be generated for existing branches.
- Reports can be generated with brought forward balances.
- Rich in functional analysis and charts.
- Reports can be displayed in PDF, XLS, rich text and word Document forms.

Available Stock Reports

- Daily journal reports
- Profit analysis reports by:
 - a) Invoice
 - b) Period (From Date - To Date)
 - c) Day by Day
 - d) Month by Month
 - e) Customer
 - f) Sales person
- Sales Reports By
 - a) Area
 - b) Sales Person
 - c) Customer
- Item Information Reports
- Item Activity Reports
- Item Price List
- Item Price History Report
- Stock Report
- Suppliers Price History Report

Accounting & Inventory Management System

- Customers Prices History Report
- Item Sales Analysis Reports
- Monthly Sales Analysis Reports By
 - a) Sales Persons (Month By Month)
 - b) Item (Month By Month)
 - c) Customers (Month By Month)
 - d) Areas (Month By Month)
 - e) Families (Month By Month)
- Movement Analysis Report
- Monthly Sales and Purchases Reports
- Inventory Reports By
 - a) Item Last Cost
 - b) Item Average Cost
- Inventory by Expiry Dates
- Warehouse Activity Reports
- Customer Activity Reports-
- Supplier Activity Reports
- Sales Persons Activity Reports
- Statistical Charts for Comparative Sales and Purchases
- Commission Reports Based on
 - a) Invoicing
 - b) Settled Invoices
 - c) Sales Margins